

Ken Hartley - Mgr.
 Ruth Sawelle
 Donna Hartley
 Mary Joseph



Ken & Donna Hartley
 Florence & Gerald Feldman



1971



Gerald & Florence Bloomer of Corp
 Giles Smith & Wife
 Bert & Helen Jessup
 Margaret & Leroy Crawley (United)

1971



Jean & George Lester
 Gayle & Dale Redford
 Dorothy & Floyd Fairbairn
 Norma & Stan Draculard
 Donna & Glen Hartley
 Corp Road & Mgr.



Ken Hartley - Mgr.
 Ruth Barnwell (officestaff)
 Mrs. Hartley Mary Joseph
 Florence & Gehard Hardman



Leo Langston
 Receiving 75 yrs
 of fine.



MAY 1955

Al Joseph



Al Joseph



Al Joseph

Al Joseph



Millar, Mo.



Grainville



Grainville 1968?



Grainville

U.C.O. Office June 17/77

In Essex . . .

An office has been opened in Essex by the United Co-operatives of Ontario to put all 8 branches under one administration.

Previously accounting and grain marketing was handled at offices in Comber and Oldcastle, with seven areas served by the Comber office.

Albert Heffernan, the former manager at Oldcastle, is in charge of the Essex office.

The new office has Royter news service to provide the latest information on commodity markets and markets around the world.

There are eleven employees at the central office,



Albert Heffernan
Manager

handling all accounting for the branches at Comber, Cottam, Oldcastle, Blythwood, Ruthven, Kingsville, Woodslee and Arner.

U.C.O. in Essex County handles approximately \$16 million in sales annually with \$6 million in retail sales and the remainder in grain marketing.



Oldcastle Co.



Archive photo and historical information by Mary Jessop.

Walter Jessop was one of the original founders and the second manager of the Oldcastle CO-OP. This picture (taken in the late 1920s) shows him sitting on the step of the general store.



th. Bannell - Charles H. Bannell



Wayne & Richard
Bandwell.



Dorley



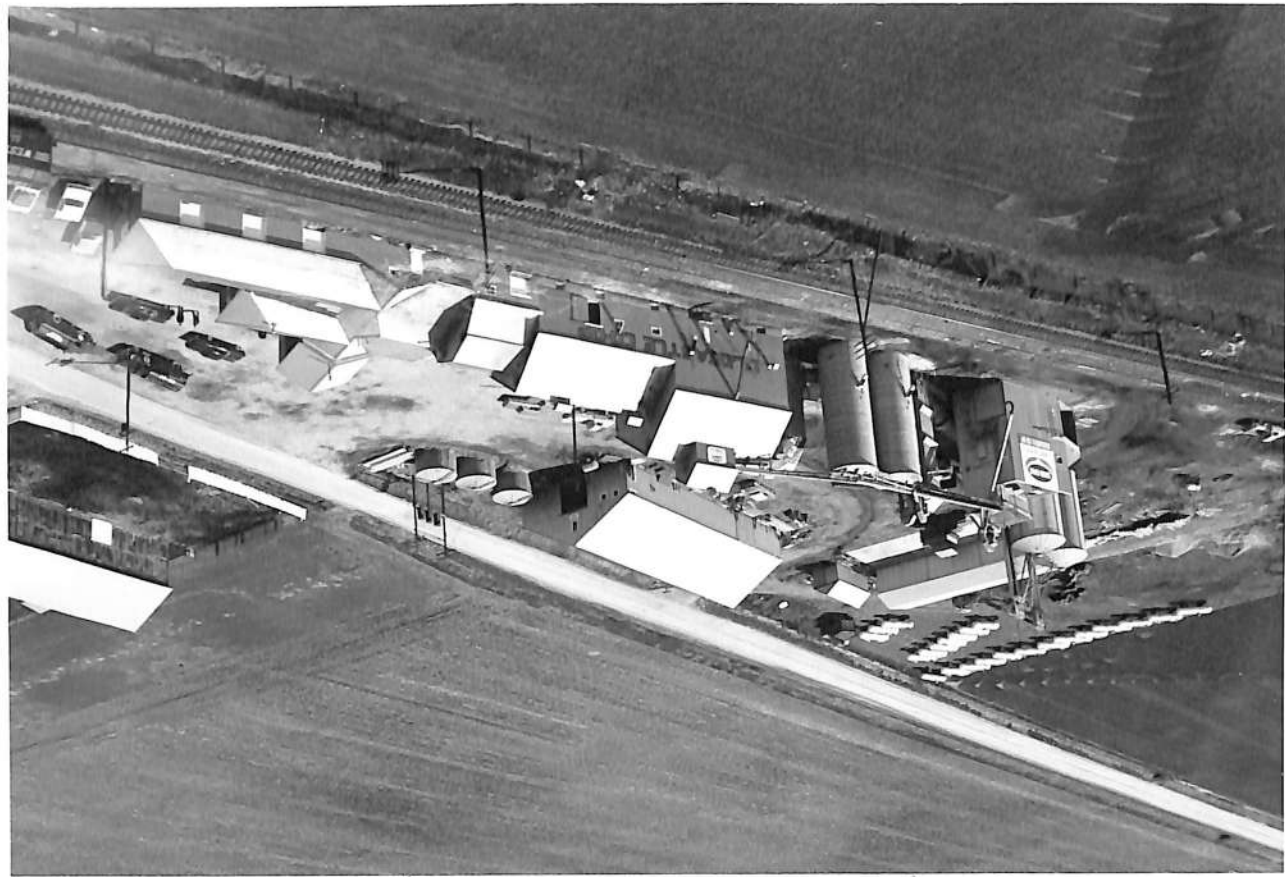
Leonard Vanderhorst, B. L. Vanderhorst farm in Lockwood



Lionel Vanderbeek - Andy Dunsicker



CARSON JESSOP - OLDCASTLE STORE



CO-OP - SOUTH ANNIVERSARY PHOTO 1970

Win Trip To Switzerland . . .



Shown, left to right: Mr. & Mrs. Ken & Donna Hartley, Oldcastle Co-operative, Oldcastle; Ross Peters, District Sales Supervisor, Farmers Supply & Equipment Ltd.; Jack Peart, Sales Manager, Farmers Supply & Equipment Ltd. As one of 25 winners of the Bolens Alpine Ambassador Awards, Mr. & Mrs. Hartley receive a free trip for two to Switzerland in October.



WHEAT HARVEST—The wheat harvest was delayed by rain so that when combines were able to start work the operators paid no attention to the 40-hour week. This caused long lineups at district elevators, including Oldcastle Co-

Operative, where unloading has continued some nights until 3 a.m. It is not unusual to have from 40 to 50 trucks or farm wagons waiting to unload.

(Star Staff Photo)

*Lane
Madsen*



HANDLE WHEAT CROP — An important crop handled by the Oldcastle Co-op is wheat. During the three-week wheat harvest period the farmers line up with their wagons and

the co-op has storage facilities to handle 60,000 bushels in a 24 hour period. Here, an electric hoist is dumping the wheat from a wagon into the grain cleaner.

★ ★ ★

★ ★ ★

★ ★ ★

Many Changes Since 1920

Oldcastle Co-op Going Concern

OLDCASTLE — The Co-op here was formed in 1920 to serve the community with groceries but now the grocery business is almost extinct at the co-op. Co-op officials have found it hard to compete with the vast number of modern supermarkets that have sprung up in the interim period.

Instead the co-op now carries a complete line of farm materials—petroleum, fertilizer, feed, in short, anything that a farmer

could need. Wheat, soya beans, corn, oats and barley are received in volume.

Starting from a grocery store in 1920, the 450 member co-op has grown steadily since 1951 when the first grain storage elevator was erected. The grain elevator was followed by a new feed mill in 1952.

The following year saw the co-op put in a seed cleaner so that farmers could bring in

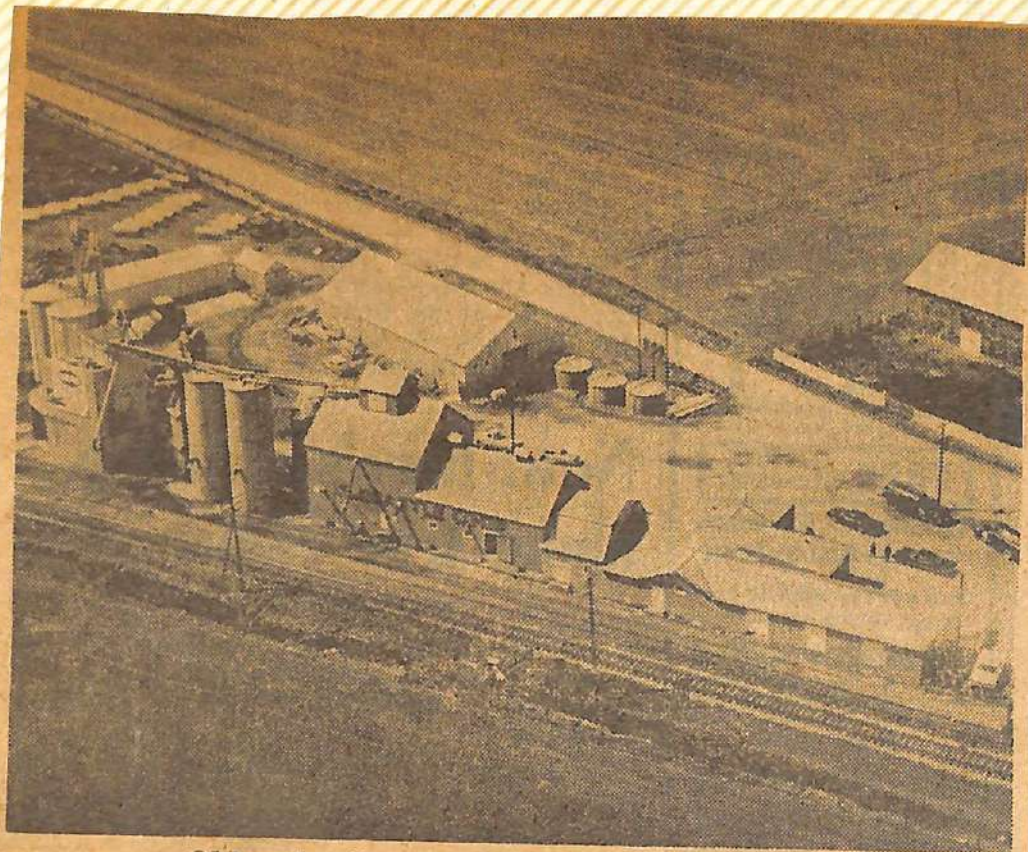
their seed to be treated and top quality seed would be ensured. In 1958 a large warehouse, 50 feet by 200 feet, was built to store fertilizer and cement.

Progress was continued this year when two new silos were erected, capable of storing 10,000 bushels of grain.

The co-op now has a maximum storage of 50,000 bushels. Also new this year is the grain dryer, capable of drying six hundred bushels of wheat an hour.

Manson Jessop, manager of the co-op, who has worked there for 26 years, figures the most significant move made was construction of the grain elevators in 1951.

Limited storage facilities previously had hampered the co-op's ability to handle all the farmers. He also credits the use of ammonium nitrate fertilizer as making a vast improvement in crop yields over the years.



Oldcastle Co-op marks 50th anniversary

*July
1970*

Officials see record year

By DON HARRIS

OLDCASTLE — Officials of Oldcastle Co-Operative are predicting a record year. They say area crops are among the best in recent years and anticipate '70 sales totals will top the \$2,000,000 mark.

The Co-Op, one of the oldest farm supply firms in the country, is marking its 50th anniversary this year. The company was granted its charter in February, 1920 and commenced actual business May 11 of that year.

The first building was a frame 20-by-40-foot structure. Main business was shipping grain and selling groceries. Grain at that time was shovel-

led into box cars. There were no elevators. Sales during the year totalled about \$7,500.

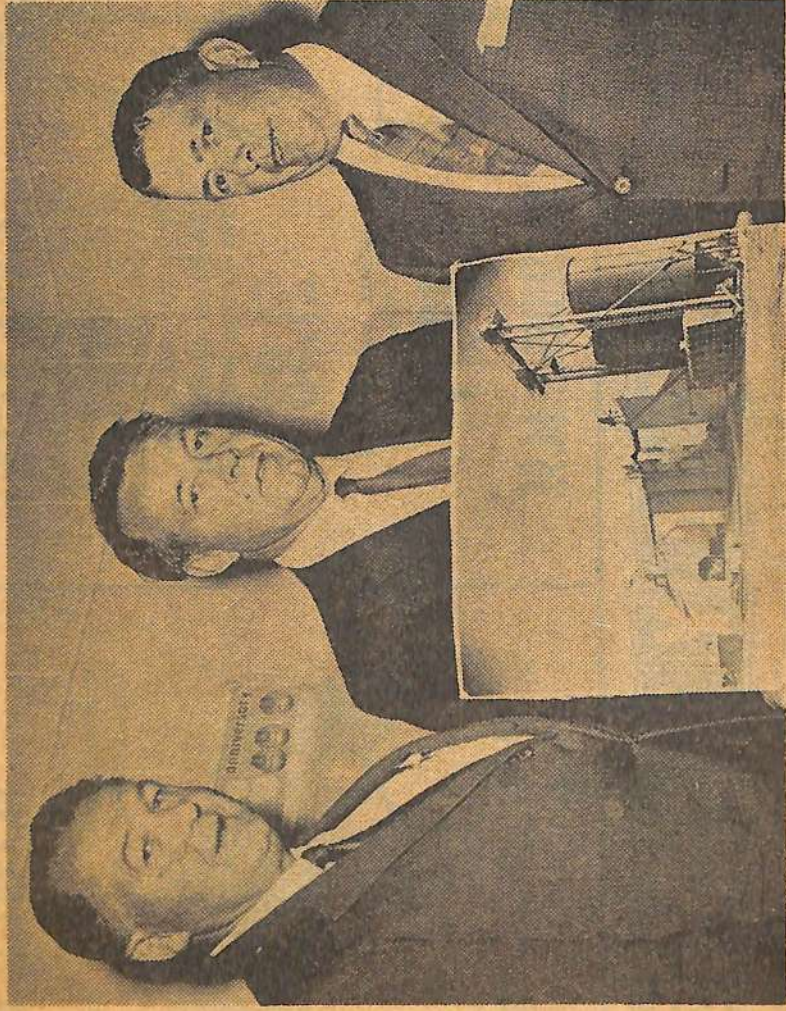
The Co-Op now has its own grain elevators, dryers and seed cleaners and mills its own brands of feeds and feed supplies. During 1969 it was enfranchised as a Canadian Industries Ltd. 'Agromat.'

It offers a broad range of farm supplies, including fertilizers and equipment for direct application of these, building materials, seed, fencing, coal, pesticides, agricultural polyethylene film and petroleum products.

Manson Jessop, company manager, says the Agromat is providing a package of technical, marketing and economic services to assist

farmers "maximize the profit potential of their resources."

The original slate of company officers included Walter Jessop, John McAuliffe, Loftus LePain, A. D. Kavanagh, G. B. Collins and Robert Halford. The company had 80 members at the outset, less than 20 per cent of today's total.



A GOLDEN MOMENT—Oldcastle Co-operative marked its 50th anniversary of operation during a banquet at McGregor Knights of Columbus hall. From left, examining a drawing of the co-operative: Lloyd Fairbairn, Maidstone, a director; Manson Jessop, Oldcastle, manager-treasurer, and Stanley A. Drouillard, McGregor, president. More than 300 attended.



DEADLY—Manson Jessop, general manager of the Oldcastle Co-operative, shows some of the warning literature that accompanies the mercury compounds. The warnings point out the deadliness of the mercury to both man and animal.

Mr. Apr 4/69

PAGE 6



Manson Jessop (seated), manager and treasurer of Oldcastle Co-operative, discusses a report with his son Gary, who is field sales representative for Canadian Industries Ltd.

Oldcastle Co-Op Receive Franchise

One of the oldest farm supply firms in Essex County, the Oldcastle Co-operative, has been enfranchised as a C.I.L. "Agromart" in the Oldcastle area, Manson Jessop, general manager and treasurer of the firm, announced today.

According to Mr. Jessop, installation of a bulk fertilizer blender has been completed so that growers can now take advantage of the economies realized in bulk fertilizer application. Raw materials for use in the bulk blender come from C.I.L.'s Lambton works at Courtright, Ont., the company's Hamilton works and from the potash fields in Saskatchewan.

In addition to mixed turf and garden fertilizers, Oldcastle Co-operative is a major supplier of anhydrous ammonia and nitrogen solutions and has available a

a good stock of hardware items, garden implements, work clothes, footwear, animal pharmaceuticals and groceries for the farm kitchen.

The co-operative has its own grain storage elevators including grain driers and seed cleaners and mills its own brand of animal feeds and feed supplements.

The Oldcastle Co-operative was established as an independent co-operative by Mr. Jessop's father, Walter Jessop, 49 years ago. From a small country store it has grown into a thriving farm supply business grossing approximately \$2,000,000 a year.

Officers of the firm are: president, Stan Drouillard; vice-president, Lloyd Fairbairn; secretary, Giles Pagot; manager and treasurer, Manson Jessop. Other directors are John Shuel, Norman O'Neil, Gerald Herdman and Clifford O'Neil.

Mr. Jessop said that its associ-

OLDCASTLE

Apr 8/69
Carson Jessop is a patient in Hotel Dieu, for observation and treatment.

OPEN 'N' ALL OPEN HOUSE

come in and join the fun!

**SATURDAY
APRIL 20th
11 a.m. - 5:30 p.m.**

OLDCASTLE CO-OP's NEW FARM & GARDEN CENTRE

10,000 sq. ft. of Showroom Opens This weekend, Packed with Hundreds of Specially Priced Seasonal Attractions.



Centre Manager Kenneth
and staff welcome you to

GRAND OPENING SPECIALS

True-Temper & Grant Garden & Farm TOOLS	ALL SHUR-GAIN Animal Health Products
10% OFF For Opening	15% OFF Regular Price

OPEN HOUSE PROGRAM

**OFFICIAL
OPENING**
2:00 p.m.
SATURDAY

PORK BAR-B-Q
5:30-7:00 — Friday
12:30-2:00 — Saturday

Adults Grand Prize
Bolen's Power Mower
Homelite Chain Saw
Children's Draw
WIN A PET PONY

**BALLOONS
DOOR
PRIZES**

**ENTERTAINMENT
ALL SATURDAY
AFTERNOON**

**FREE
REFRESHMENTS**
**FUN FOR ALL
THE FAMILY**

**MAGICIAN
MARCHING
BAND**

er 3/4" 11-Pc. Socket Set Reg. 39.95 29.95	Gray 14-Pc. Combination Wrench Set Reg. 34.95 24.95
--	--

TEX-TEN
Saddles &
Equipment
10% OFF
ALL PRESENT STOCK

Cyclone
Lawn Seeders
Reg. 24.95
Sale 19.95

SPECIALS ON ALL
Lawn Chairs
& Bar-B-Q's

Lawn & Garden
Green Cross
Pesticides
25% OFF

Fertilizer
10-10-10 — 50 lb. Bag
3.00
4X — 50 lb. Bag
Special **9.95**

1/4" Black & Decker
DRILL
2-Speed — Reg. 16.95
Special **13.49**

M.T.D. 8-h.p.
Garden Tractor
with Mower
Recoil Starter
Reg. 519.00
Sale 499.00

M.T.D. 8-h.p.
Garden Tractor
with Mower
Electric Start
Reg. 599.00
Sale 549.00

Bolen's
Ride Mowers
8-h.p Recoil Start
599.95 Net
(Includ 7% Sales Tax)

Bolen's
Ride Mowers
8-h.p Electric Start
699.95 Net
(Includ 7% Sales Tax)

3 1/2-h.p.
Sapper
Self-Propelled
Lawn Mower
Reg. 249.95
Special **199.95**

Bolen's
G-10 Tractor Reg. 1,599 with Mower
SPECIAL 1,330

Bolen's
G-14 Tractor Reg. 1,949 with Mower
SPECIAL 1,652

Bolen's
H-14 Tractor Reg. 2,299 with Mower
SPECIAL 2,002

Bolen's
QT-16 Tractor Reg. 2,799 with Mower
SPECIAL 2,357

Bolen's
ST-16 Tractor Reg. 2,599 with Mower
SPECIAL 2,157
Above Mower Deals on Stock Only

Bolen's
Husky Pup
Reg. 799.00
749.00



KENNETH HARTLEY



DONALD McCANN



MARY JESSOP



ERLA FRANCOITIE



LOIS KNIGHT



COME ONE 'N ALL OPEN HOUSE

SATURDAY
APRIL 20th
11 a.m. - 5:30 p.m.

FRIDAY
APRIL 19th
11 a.m. - 9 p.m.

come in and join the fun!

OLDCASTLE CO-OP's NEW FARM & GARDEN CENTRE

10,000 sq. ft. of Showroom Opens This weekend, Packed
with Hundreds of Specially Priced Seasonal Attractions.



Farm & Garden Centre Manager Kenneth Hartley and his qualified staff welcome you to their Open House.

GRAND OPENING SPECIALS

True-Temper & Grant
Garden & Farm
TOOLS

10% OFF
For Opening

ALL SHUR-GAIN
Animal Health
Products

Less
15% OFF
Regular Price

OPEN HOUSE PROGRAM

OFFICIAL
OPENING

2:00 p.m.
SATURDAY

PORK BAR-B-Q
5:30-7:00 — Friday
12:30-2:00 — Saturday

Adults Grand Prize
Bolen's Power Mower
Homelite Chain Saw
Children's Draw
WIN A PETPONY

BALLOONS
DOOR
PRIZES

ENTERTAINMENT
ALL SATURDAY
AFTERNOON

FREE
REFRESHMENTS
FUN FOR ALL
THE FAMILY

MAGICIAN
MARCHING
BAND

True-Temper Screw Driver Set Reg. 1.95	Challenger 14" 11-Pc. Drive Socket Set Reg. 39.95	Gray 14-Pc. Combination Wrench Set Reg. 34.95
SALE 5⁹⁵	SALE 29⁹⁵	SALE 24⁹⁵

TEX-TEN Saddles & Equipment 10% OFF ALL PRESENT STOCK	Cyclone Lawn Seeders Reg. 24.95 Sale 19⁹⁵
---	--

30-Gallon H-Organic Fertilizer 10-4 Reg. 7.95 Special 5 ⁹⁵	SPECIALS ON ALL Lawn Chairs & Bar-B-Q's
Green-Chlor Lawn Fertilizers Lawn Green — 20-10-5 22 lb. — Reg. 5.99 Special 4 ⁹⁵	Lawn & Garden Green Grass Pesticides 25% OFF
Wheat Feed — 20-10-5 22 lb. — Reg. 7.99 Special 6 ⁹⁵	Fertilizer 10-10-10 — 50 lb. Bag 3 ⁰⁰
Lawn Feed — 7-7-7 40 lb. — Reg. 3.49 Special 1 ⁴⁹	40 — 50 lb. Bag Special 9 ⁹⁵

14" Black & Decker DRILL 2-Speed — Reg. 16.95 Special 13 .49	M.T.D. 8-h.p. Garden Tractor with Mower Recoil Starter Reg. 519.00 Sale 499 .00
	M.T.D. 8-h.p. Garden Tractor with Mower Electric Start Reg. 599.00 Sale 549 .00

Bolen's Ride Mowers 8-h.p Recoil Start 599 95 Net (Include 7% Sales Tax)	Bolen's Ride Mowers 8-h.p Electric Start 699 95 Net (Include 7% Sales Tax)
3 1/2-h.p. Sapper Self-Propelled Lawn Mower Reg. 249.95 Special 199 95	

Bolen's G-10 Tractor Reg. 1,599 with Mower	SPECIAL 1,330
Bolen's G-14 Tractor Reg. 1,949 with Mower	SPECIAL 1,652
Bolen's H-14 Tractor Reg. 2,299 with Mower	SPECIAL 2,002
Bolen's QT-16 Tractor Reg. 2,799 with Mower	SPECIAL 2,357
Bolen's ST-16 Tractor Reg. 2,599 with Mower	SPECIAL 2,157
Above Mower Deals on Stock Only	
Bolen's Husky Pup Reg. 799.00	749⁰⁰

OLDCASTLE CO-OPERATIVE

HWY. # 3 AT WALKER ROAD

Phone 737-6141 or 737-6142



KENNETH HARTLEY



DONALD McCANN



MARY JESSOP



ERLA FRANCOITIE



LOIS KNIGHT



EVERY GREEN
MIKE BUTTON
FIELD REPRESENTATIVE
NOT AVAILABLE FOR PHOTO.