

SIX CORNERS

The Six Corners is exactly that, a community where three roads come together and cross at a junction of County Road #19 or the Essex Townline it is called but is the townline between Maidstone Township and Sandwich South Township. On the Sandwich South side is old No. 98 Hwy, now County Road #46, and North Talbot Rd. On the Maidstone side is Old Hwy. 98 or County Rd. #46 and North Talbot Road and running North and South is County Rd. 19 crossing over these two other roads at what is known as the SIC CORNERS. S. S. No. 5 & 8 R.C. Separate School had been located on the South East corner and the children from the surrounding area from both Sandwich South and Maidstone Townships attended this school along with the children of Maidstone Hamlet itself. When the schools of Sandwich South were all phased out, this school also was phased out when a new R. C. School was built in Maidstone names St. Mary's R.C. Separate School adjoining St. Mary's R. C. Church on No. 3 Highway. The school was sold in the early 1960's. The Rainbow Chemicals, Ltd., established a new branch office and Warehouse on Highway #114 and Old Highway #98, now County Road #46 on May 1, 1965, on the old school site. The schoolhouse has been renovated into office space and a new warehouse has been constructed. The company is equipped to give complete service in liquid and ry fertilizers and liquid nitrogen. It deals primarily with Co-operatives and grain dealers. John Morand headed a five-man staff. Every member of the crew is highly qualified for his work. The Company has a fleet of custom liquid-nitrogen and bulk dry fertilizer applicators. These can be rented by farmers. The Rainbow Warehouse has a 400-ton capacity. Tanks at the site can store approximately 200 tons of liquids. Raibow Chemicals was started in 1956 in Tilbury.

Aug. 14th, 1959 - Donald Shanahan, a local young man has opened up his Service Station on #98 or County Rd. #46 at the Six Corners. Congratulations to Don in his fine new endeavour from his host of friends where he was born and raised.

Aug. 29, 1954 - Ward B. Larkin has sold his farm to Eugene St. Louis, Jr.

Dec. 3, 1954 - The Six Corners will soon be a village. Some new homes, a gas station, and other business places are being planned. Mrs. Fred T. Rutter picked a beautiful bouquet of roses from her garden, Saturday, Nov. 27th. Her farm is at the Six Corners on Highway 98 just across the border townline of Sandwich South and Maidstone Townships.

July 6, 1956 - Leo Greenway was well enough to write a short letter from Olive View San, San Fernando, Calif. to say that he is showing improvement from a major operation performed May 15th. His many friends here are hoping he will continue to get well. Letter written to Carson Jessop. Leo once lived and farmed here, the Greenway home being the first big white house from the Corners on Hwy. 114, about one-half mile from the hamlet of Maidstone.

July 27, 1956 - No. 5 and 8 Separate School is building an additional room to the now 2-room school and will enable the children who have had to go to No. 7 school to be able to go to their own school. It is hoped it will be ready for the Fall Term. In 1965 where this school was located and removed, the Rainbow Chemicals, Ltd., established a new branch office and Warehouse.

Oct. 26, 1956 - Jimmy Barry is building a lovely ranch type home on No. 98 Highway at the Six Corners, on his property, from Mrs. Mary G. Davis, of Detroit. This Highway has since been renamed County Rd. #46. - Aug. 1st., 1958:

Sept. 26, 1958: Patrick Larkin received word of the death of his older brother James Larkin, who died suddenly in Ireland from a heart attack. Mr. Larkin was a farmer and had been in good health. He leaves to mourn his loss, his wife and two children, a brother Joseph in Ireland, Paddy of Detroit and here; Andy of Halesite, Long Island, N.Y. and Michael of New Jersey. Sincere sympathy from Paddy's host of friends. - Oct. 24, 1958: Seventy guests are invited to a shower (Bridal) this Thursday evening, at the King George Hotel, Belle River, to honour Miss Gloria Kwaitkowski, a popular November bride-elect. Gloria is the daughter of Mr. & Mrs. Joe Kwaitkowski, now of Belle River but who formerly lived at Six Corners. - Dec. 12, 1958: Mr. J. Jerome who purchased the Raymond Scully farm, has fenced the entire farm and will raise cattle on the farm.

April 26, 1985, E/W/P. MRS MARGARET BARRY PASSES: Margaret Barry, 83 years, of R. R. 3 Maidstone, passed away Thursday, April 18th at IODE Hospital. She was predeceased by her husband Thomas Barry (1969). She is survived by her sons, William F. and John E. of Windsor, James H., and Thomas H. of Maidstone, Edward J. of St. Clair Shores, Mich.; 8 grandchildren, 2 great grandchildren

Funeral services were held from the Stewart L. Kennedy Funeral Home, Essex, on Saturday, to St. Mary's Church, Maidstone with interment in St. Mary's Cemetery. Mrs. Barry was a retired teacher.

Dec. 10, 1974, Windsor Star: The past several days have been well sprinkled with tales of what happened to some people caught in the Dec. 1st. blizzard and of acts performed by others in the wake of the storm. Here's a random sampling: The Spanish Vill-type home of Helmut and Alma Bernard on County Road 46 in Sandwich South Township, had 21 stranded people brought in by snowmobiles sleeping on the floors and in the bedrooms. (The Bernard's four children gave up their beds to the elderly). Some were speechless, some were crying, especially those with young children, and will likely not forget the shelter and food provided by the Bernards for close to two days. The J & S. Esso Service Station in the vicinity of the Bernard home donated about 300 gallons of gasoline to snowmobilers, including Evan and Ray Beneteau, who found many area homes in which to billet the stranded and hungry travellers. The Service Station is owned and operated by Jim Jewell.



LAST RITES — Rev. Marcel Laboeuf of St. Anne's Parish, Tecumseh, gives last rites to Mrs. Augusta Deslauriers, 75, one of

two victims of a three-car accident at County Roads 46 and 19 Wednesday. It was the second serious accident at that intersec-

tion within a 24-hour period. An Ontario Provincial Police, Essex detachment, officer accompanies Fr. Laboeuf.

THE WINDSOR STAR, SEPTEMBER 3, 1971

Two killed in 3-car county collision

Two people are dead following a three-car accident at County Road 19 and County Road 46 Wednesday afternoon.

Dead are: Augusta Deslauriers, 75, of 4 Dolphin Rd., Marlin Centre Mobile Homes, 1825 Division Rd.;

Peter Murphy, 22, of 1691 Highland Ave., Windsor.

Mrs. Deslauriers was pronounced dead at the scene, Murphy died later at Metropolitan Hospital.

The driver of a third vehicle, struck by Mrs. Deslauriers' auto after the first collision with the Murphy vehicle, was unhurt. The driver was not named by police.

The Deslauriers vehicle was northbound on County Road 19 and was in collision with the Murphy car which was going west on County Road 46. The third vehicle was stationary facing south on the north side of County Road 19. The body of Mrs. Deslauriers had to be cut from the wreckage.

The accident occurred at the same intersection at which four people were injured in a two-car crash Tuesday afternoon.

The intersection is one-and-a-half miles south of the Essex OPP detachment's headquarters, just south of Interchange 3 on Highway 401.

County Rd. 19 is also known as the Sandwich South-Maidstone Township Line. County Rd. 46 was formerly Highway 98.

The spot is regarded by local residents as especially hazard-

ous, although Ontario Provincial Police say it is no more so than a number of other intersections in the county.

A spokesman for the Essex Ontario Provincial Police detachment said the deaths were the first at the intersection this year.

He said there have been several injury accidents in the intersection in 1971 and said area residents have lodged complaints with the Ontario Department of Transport and Communications on several occasions.

The spokesman said the majority of the accidents in the intersection result from cars failing to yield. He added that large (four-feet wide) stop signs were installed to replace smaller ones a short time ago.

Jim Jewell, operator of J and S Esso Service Station, at the northeast corner of the intersection, is particularly worried about the potential results of accidents there.

"This is a busy intersection with heavy traffic both ways. People are careless, maybe tired coming home from work," he said.

He suggested that flashing warning lights should be erected to replace the present "stop" signs. He said he is afraid that an accident may result in cars coming onto his lot, hitting gas pumps and "killing more than just the occupants of the cars."

Mr. Murphy was manager of the Singer Sewing Centre in Leamington.

Funeral will be Saturday — Marcotte Funeral Home, 870 Wyandotte St. E., in charge.

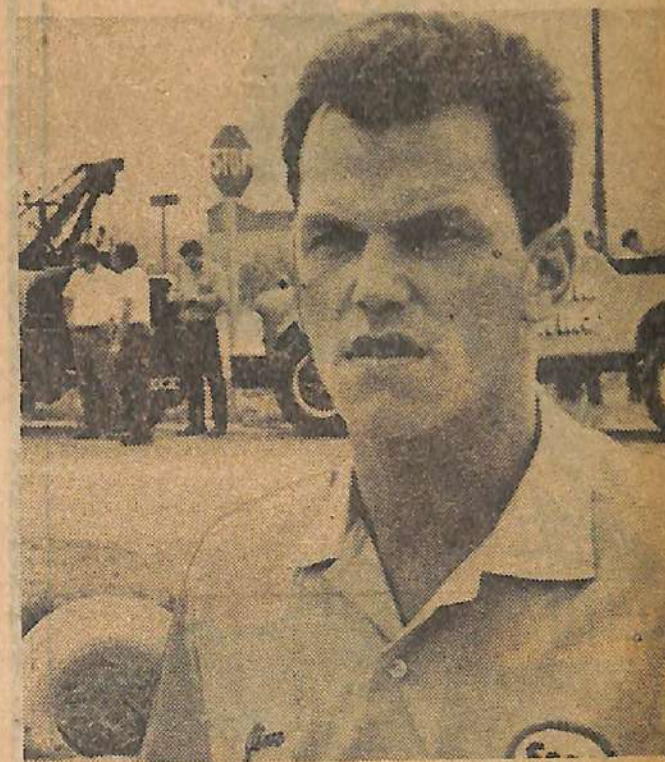


Photo by Walter Jackson

CONCERNED—Service station operator Jim Jewell, who is worried about further accidents at the Corner of County Roads 46 and 19, is seen with wreckers in the background.

Extra caution needed at troubled corners

By BRIAN KAPPLER

Two serious accidents at County Roads 46 and 19 this week point up a serious traffic problem—accident prone intersections.

Police and Ontario Provincial Police agree — some intersections are dangerous, no matter how many signs, lights, and patrol cars try to protect motorists from each other.

The accidents at 46 and 19 are a good example. Tuesday, four persons were injured in a two-car crash. Wednesday, two were killed in a three-car collision.

Policemen from the county and the city agree that dangerous corners are those that have a high amount of traffic and those that involve merging traffic.

In Essex County, the summer months provide the highest accident totals, because of the increase in tourist traffic. "There's no doubt that this is a high traffic county in the summer," says OPP Staff Sergeant Fred Rawlings of the Essex detachment.

The intersection of 46 and 19 is one of the worst accident spots in the county, despite measures to improve the situation.

Ironically, there are OPP cars around the intersection of 46 and 19 more than any other — the cars get gasoline at a service station there. The corner is about a mile and a half from the OPP headquarters on Highway 401.

When the province turned over County Road 46 — formerly Highway 98 — to the county about a year ago, the speed limit was cut to 50 m.p.h. from 60. Earlier, overhead illumination was installed. But there has been no noticeable decline in the accident rate there.

But 46 and 19 is not the most dangerous corner in the county. That dubious honor is shared by several intersections, mostly on roads heading toward the city.

Other dangerous areas in the county include the Turkey Creek Bridge area near LaSalle; Howard Avenue and Pike Road and Howard Avenue and Highway 3. But a recent re-designing of that intersection has reduced the number of accidents there, OPP officials say.

In the city, the worst intersections, again, are those that carry lots of traffic. Notably bad, Constable Ken Johnson of the city police traffic department says, are Tecumseh-Lauzon roads;

Drouillard, Ouellette Avenue. Other city danger spots are Riverside Drive at Ouellette Avenue and the intersection of Riverside Drive W. and University Ave. W., where the two merge to become Sandwich Street.

Most accidents are the result of a failure to yield, police officials say. "We have motorcycles and cars out at these places, but you can't be everywhere. We put up the signs and warnings, if you won't obey them we can't do much more. You end up at the corner of Giles and Marentette," Constable Johnson said. He was referring to St. Alphonsus' cemetery.

The worst time for accidents, predictably, is rush hour. Both of the recent accidents at 46 and 19 came around 4 p.m. Staff Sgt. Rawlings plans to speak to county engineers about installing a flashing light at the corner.

But OPP Constable Bill Evans echoes the city's Constable Johnson. "Speed doesn't have much to do with it. When people won't obey the signs you put up, and fail to yield, there's nothing you can do."

Since the beginning of this year, there have been nine traffic deaths in Windsor, and 24 more in the county.

THE WINDSOR STAR, SEPTEMBER 3, 1971



County Roads 19 and 46, where two died in this accident Wednesday is one of the trouble areas

Accident Causes Pop Shower . . .

ESSEX FREE PRESS, FEB. 8, 1978



CLEAN UP — Broken pop bottles and cases littered County Road 19 Saturday afternoon when a pick-up and the beverage truck collided at the intersection. Department of Highways crews attempted to clear away the jagged glass

embedded in the snow. Driver of the truck suffered head injuries. Two cars waiting for the stoplight were also involved in the accident.

It took nearly three hours to clear broken glass and bits of plastic pop bottle cases from County Road 19 and the approach to J and S Service Station after a truck load of pop was in a collision Saturday afternoon. The accident sent pop bottles and cases flying in every direction.

Police report the truck Paquette Brothers, Tecumseh Road in Windsor, driven by George Laurie of Chatham, ran a red light as it proceeded north on County Road 19 and was struck by a pick up truck heading west on County Road 46.

Two other cars waiting at the stop light to proceed south were involved. The rear end of the truck hit the first car driven, a 71 Pontiac driven by Fred Durfy of Windsor causing \$1,000 in damage. The second car, driven by Richard Rive of Kingsville received about \$150 damages when a pop case smashed through the windshield.

Driver of the Cola truck, George Laurie, was taken to Hotel Dieu with head injuries.

The accident occurred at 1:15 at the intersection of County Roads 19 and 46, an intersection where many traffic deaths occurred prior to the installation of traffic lights five years ago. This is the first accident since then. George Momcilovich, driver of the pickup, lives on County Road 46 within half a mile of the accident scene. Damage to the left front end of his truck was estimated at \$800. Loss of the pop bottles and beverages along with damage to the truck was estimated at \$1,000.

County Road 19 was closed for more than two hours while department of highways crews cleared away the broken bottles and cases and cleared away the glass imbedded snow on the ramp to J and S. Service. Owned and operated by Jim Jewell.